

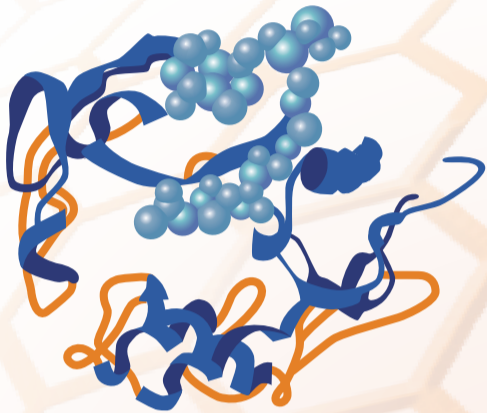
## International Symposium

# Various functions of Shati/Nat8l Brain, Pain and Metabolism

**March 14 (TUE) 2017 9:00-12:15**

**Nichi-iko Auditorium** University of Toyama  
2630 Sugitani, Toyama-shi, Toyama 930-0194, Japan

**Free entry, No appointments necessary**



**9:00 - 9:30**

Shati/Nat8l is a key molecule in onset of addiction and psychiatric diseases

**Atsumi Nitta**

Graduate School of Medicine and Pharmaceutical Sciences, University of Toyama

**9:30 -10:15**

*N*-acetylaspartate metabolism outside the CNS

**Juliane Bogner-Strauss**

Institute of Biochemistry, Graz University of Technology, Austria

**10:30 -11:00**

Role of spinal Shati/Nat8l in neuropathic pain

**Masahiro Ohsawa**

Graduate School of Pharmaceutical Sciences, Nagoya City University

**11:00 -11:45**

*N*-acetylaspartate:from canavan disease to cancer

**Aryan Namboodiri**

Uniformd Services University of the Health Sciences, USA

**11:45 -12:15**

Physiological functions of a novel drug dependence-inhibitory molecule "Shati/Nat8l"

**Toshitaka Nabeshima**

Fujita Health University, Graduate School of Health Sciences

### Host

**Atsumi Nitta Ph.D.**

Department of Pharmaceutical Therapy & Neuropharmacology,

Faculty of Pharmaceutical Sciences, Graduate School of Medicine and Pharmaceutical Sciences, University of Toyama.

### Secretary of Office

**Yoshiaki Miyamoto Ph.D.**

Department of Pharmaceutical Therapy & Neuropharmacology, Faculty of Pharmaceutical Sciences, Graduate School of Medicine and Pharmaceutical Sciences, University of Toyama.

2630 Sugitani, Toyama 930-0194 JAPAN Tel / 076-415-8823, Fax / 076-415-8826 E-mail / miyamoto@pha.u-toyama.ac.jp

### Sponsor

Toyama City, Takaoka City, Toyama Hospital Pharmaceutical Association, The Consortium of University